

RETIREMENT FARM AUCTION

Saturday, Nov. 18, 2017 9:45 am

LOCATION OF SALE: 1 mile North of Odin, MN on Cty. Rd. 19 . From Butterfield: 3 miles East on Hwy. 60 then 5 1/2 miles South on Cty. Rd. 19. From St. James: 4 miles West on Hwy 60 then 5 1/2 miles South on Cty. Rd 19. From Ormsby: 1 1/2 miles North on Hwy 4 the 2 1/2 West on Cty Rd. 7, then North 1 mile in Cty Rd. 19. **Lunch stand will be available**

TRACTORS



< Case IH 8940 MFWA 480-42 rubber 75 %, w/ duals, 4Hyd. Outlets, 6475 hrs, 1000 PTO, Serial No. J1A0372814;



> Case IH 5288 18.4-38, w/duals, 3 Hyd. Outlets, 1000PTO, 2000 hrs. on new Engine, Serial No. 513;

> Bobcat 773 Turbo Level lift, Cab & heat, 941 hrs; dirt bucket w/ tines; 6ft.-8ft. Snow bucket; pallet forks; 1066 IH-1 owner; IH Super M; IH M w/3 pt.-good rubber; IH F20-w/hand brakes; 8940 wts. & extended bracket;



COMBINE



Gleaner R62 98', 42" tires & duals, long auger, 600 hrs. on new motor, Sonnybrook rotor-Mauer Ext.;

Gleaner 825 25' beanhead w/ Crary air reel; Gleaner 6x30 Huggerhead; Header trailer for 25' platform;

MACHINERY

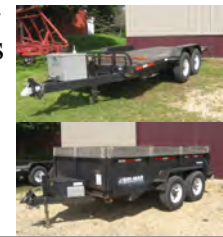
Wishek disk 1862-14 ft.; IH 900 cyclo 12 x 30 w/ Kelderman frontfold bar-yetter trash cleaners; 4800 IH 27 1/2' Field cult w/ 3 bar mulcher; JD BWF 191/2' Disk; IH 133 6-36 Vert. fold-20 ft. bar; IH 133 12x30 vert. fold cult; IH 133 -20ft. Bar vert. Fold; Case grain drill w/ grass seed on rubber; Flat-bed w/ JD gear; 10 ft. Soil Pulverizer; 250 gal. fuel tank; (4) 500 gal fuel tanks w/ pumps; Loftness 962 Snowblower-1000 or 540 PTO; Feteral 10-66 auger w/ Hyd. Swing hopper hyd. Lift; Hutch 53 ft. 8" Auger PTO; JD 14AW Disk; IH 7 section drag-hyd. Lift; 2 section drag; rollover scraper; Hutch 6" 32 ft. Auger elec. drive; Snowco jump Auger 8" 2hp Elec; 1400 gal. steel Watertank on trailer; Winpower 18/30 PTO Generator; 3 pt. one-row planter; 3 pt. Post Auger; Snoco Screener; Flarebox; w/ gear; 12 Yetter trash cleaner; JD 603 6' 3pt. Rotary Mower; JD 3 pt. blade; 18.4 x 38 duals (2)sets for 1066;

PICKUP & TRAILERS



89' Chev. 3500 Dually 4 x 4 Auto 454 Ext. cab-ag hitch-5th wheel plate- Hinicker 9 ft. snow plow;

Bri-Mar 7x12 dump trailer-7500 lb. axles-Elec. Over Hyd hoist; Mauer 16 ft. Hyd. Tilt-10,000 lb. axles w/ rubber top-chains & binders; 7x12 machinery trailer w/ winch tiltbed; Towbar; Fuel tank trailer-175 gal. w/ 12 volt pump-15gpm pump;



WAGONS & LIVESTOCK EQUIP.



Parker 6250 w/ lights & brakes; (4) Killbros 385 gravity Boxes -3w/ brakes & truck tires; Killbros 350 w/ Lindsay gear; Parker 170 bu. Gravity box w/ gear & tarp.; Westfield brush auger; Parker fert. Auger; Ext. for Killbros wagon; JD 34 Manure spreader; 5 wheel rake; Powder River Squeeze chute; New rolls of barbwire; 20' Bale elevator; Water tanks; Wood & steel fence posts; (4) 16' pipe gates;



ANTIQUES

Wards platform scale; Walking plow; Potatoe plow; Flare box on steel wheel gear; Rotary Hoe wheels; Steel wheels; Mobile gas can; Tires & rims; 14.9 x 38 for IH 300; 2 Row Ford cult.; Adams road grader; Wis. Motor; Belt pulley for F20 & M; Steel fanning mill; Speedjack; Cupalos; Fenders for M; Wheel weights; 2 pt. digger;

MISCELLANEOUS & TOOLS

3/4" Socket set; 3/4 Jumbo socket set; 220 chords; 110 volt winch; Makita chop saw; Miller 225 AC welder; Lincoln welder; Powerhack-saw; US 2 hp. Air compressors; Engine stand; Cement mixer; Hyd. Press; Jeffers quick hitch; Snow bucket; Impact wrenches; IH 2 pt. adapt; Alum. Ext. ladder; Step ladders; Shelving; Bolts; Loader forks; McCulloch generator; Receiver hitch for Chevy pickup; Hyd. Cylinders; 60 gal Fuel tank w/ hand pump and much much more...

INSPECTION: Nov. 16th & 17th-9 am to 4 pm or by appointment call Lyle (507)227-1652

AUCTIONEER NOTES: We are proud to conduct this farm retirement auction for Lyle & Mary. Their machinery was used on only 400 acres and was well maintained. Combine work done at Midway Farm Equip. Mt. Lake. Tractors were worked on by Randy Ammann. Tractors and combine will be used for 2017 harvest- so the hrs. sale day will be higher.

USUAL AUCTION TERMS: Cash or bankable check, all items sold "as is" it is buyers obligation to inspect items prior to purchase. Announcements sale day take precedence over printed material. All items must be settled for sale day and before removing items. Bidders must register for bidders number prior to bidding. All sales are final. The information given is believed to be true and correct to best of the owners and sales staff ability, but makes no warranties whatsoever. Owners and Auction staff not responsible for accidents on premise or with items during or after removal. We hope to see you at the auction. **BE PREPARED TO DOUBLE RING.**

WWW.AUCTIONEERALLEY.COM

LYLE & MARY ANDERSON, OWNER

AUCTIONEERS

Darwin Hall Butterfield,
507.327.0535
Allen & Kevin Kahler, Sherburn
Dustyn Hartung, Fairmont
Dan Pike, Jackson
Dylan Kallemeyn, Lewisville
Doug Wedel, Fairmont

Hall Auction Service

CLERKING
Hall Auction Service

Auctioneer of **AUCTION America**
Alley, Inc. Fairmont • Jackson

923 North State Street
507-238-4318