

RETIREMENT MACHINERY AUCTION

SALE LOCATION: All of the following will be sold at 2387 70th Avenue Odin, MN. From Ormsby go 1.5 Miles West on 250th Street, then go South on 70th Avenue 1.25 miles. WATCH FOR AUCTION SIGNS!

SATURDAY, JULY 21ST, 2018 @ 10:00 AM

TRACTORS: •JOHN DEERE 8300, 4427 hrs., MFWD, Power Shift, Quick Hitch, 1000 PTO, 3 Hyd Outlets, Power Beyond, Rock Box, 380/85R34 Front Tires, 480/80R46 Rear, Serial #RW8300P006638 Very Nice •JOHN DEERE 4020 w/ cab 9450 hrs.,



Factory WF, PS Trans, Single Outlet, 540/1000 PTO, Engine Overhaul, 11L-15 Fronts, 18.4-34 Rears, Serial#T89982 •JOHN DEERE 4010, 8812 hrs., Factory WF, Synchro Trans, Single Outlet, 540/1000 PTO, Overhaul at 7951 hrs., \$6,000 spent on Rear End &

Transmission, 7.5L-15 Fronts, 16.9-34 Rears, Serial#T40268 •JOHN DEERE 630, Single Outlet, 540 PTO



SKIDLOADER & ATTACHMENTS: •\$185 BOBCAT SKID STEER, 2009 Model,



1153 hrs., 2 Speed, Enclosed Cab w/ Heat, AC, & Radio, Bobtach, Deluxe Panel w/ Keyless Start, Excellent Shape Serial#A3L930047; 66" Bucket; 60" Construction Bucket; 84" Snow Bucket; Forks; Bale Spear; Grapple; Bobcat Snow Blower 2014, Model SB200, 78", Serial #713004337

MACHINERY & EQUIPMENT: •CASE IH 527B, Hyd.

Front Disc, Hyd. Leveler, ONLY used on approx. 800 acres, Very Nice; John Deere 980 Field Cultivator, Approx. 28', Walking Axles, 3 Bar Harrow, Nice, Serial #N009800X020164; Hardi Sprayer, 60' Boom, 1000 Gal Tank, Hyd. Pump, Hardi Monitor, 3 valves, 13.6-38 Rubber; IH 720 5-16" Auto Reset w/ Coulters; Deutz-Allis 1400 24'; White 435 9 Shank Chisel Plow; Lorenz 8' Snow Blower, Double Auger, Hyd. Spout, Hyd. Tip, Small 1000 PTO; Arts Way 425 Grinder w/ Scale; Silage Wagon; 5 Wheel 3 pt Rake; Hay Rake; Gehl Hi Throw Silage Loader w/ 800 Recutter; Gehl Hi Throw Silage Loader; John Deere 350 Sickle Mower; Balzer Silage Wagon w/ JD 1065 A Gear, 12.5L15; Balzer Silage Wagon; HD Minn Gear & Bed; JD 230 Disc, 19", Hyd. Wings, Cone Blades; JD 4-14" Plow; JD 5-16" Plow; Kilbros Wagon; Dakon Wagon; Parker 4000 Wagon; 300 Bushel Wagon; Flare Wagon, Livestock Trailer; Flat Rack w/ gear; JD 8 Row Cult; JD 4 Row Cult



AUGERS: Westfield 100x71, PTO, Hyd. Raise, Like New, Serial#210267; Westfield 100-31 Truck Auger w/ Power Hopper, Dolly Wheel, Single Phase 10 HP Motor, Like New, Serial#242177; Westfield Jump Auger, Hyd. Drive, Low Clearance, Like New; Buhler 856, PTO; Hutchinson 10x66, PTO, Hyd. Raise; Feterl 8X60, PTO; Poly Auger Hoppers

TRUCKS & TRAILERS: •2003 VOLVO, 319,913 Miles, 385 hp Volvo, 10 Sp Eaton Fuller, Air Ride, Aluminum Rims on Rear, Firestone 11R22.5, Serial#4V4MC9GG63N341964; •AGRILITE ALUMINUM HOPPER, Model 2011, 42', Air Ride, Aluminum Rims, Firestone 11R24.5, Shurco Electric Tarp, Bought New, Low Miles, Serial#1G9SG4228BB414036; •FORD 600 GRAIN TRUCK 1977 Model, 79,576 Miles, Tag Axle, 16' Steel Box; •REDI HAUL 2010 CAR TRAILER, Model RX 2026T, 20', Tilt Bed

MISC: 1000 Gal Diesel Barrel w/ High Capacity Fillrite Pump; 500 Gal Barrel; Cattle Panels; Steel Gates; Feed Bunks; Stock Tank; Mira Fount Water; 2 Head Gates; 2 Badger Winches; Behlen Crop Drier; 200 Steel Post+/-; Wilrich 3 Bar Drag for Field Cult; Warrior 3pt Quick Hitch; 135 Gal Shuttle w/Pump; 30 Gal Mixing Cone w/2" Pump; ATV Sprayer; 10" U Trough approx. 40', Electric Motors; JD Tandem Planter Hitch; Hand Corn Sheller; 8 N Ford Loader; JD Quick Hitch; JD Seeder; Cattle Dehorner; Hudson Brooder; Corn Burner; JE Porter Hay Trolleys; Buck Saws; Misc. Tools & other items.

VISIT WWW.AUCTIONEERALLEY.COM FOR MORE PICTURES!

DENNIS & GARLA ANDERSON

507-317-7425

TRACTOR: •JOHN DEERE 7800, 7924 hrs., MFWD, 16 Speed Power Quad, Quick Hitch, 3 Hyd. Outlets, Power Beyond, 100 & 540 PTO, 10 Suitcase Weights, 14.9R30 Fronts, 480/80R42 Rears, Good Condition, Serial#RW7800H008482



COMBINE & HEADS: •JOHN DEERE 9400,



5039 Engine hrs., 3301 Sep hrs., Dust Diverter, Chopper, 30.5/32 Fronts, 14.9-24 Rears, Been through shop every other year; Serial#H09400X660438 •JOHN DEERE 643 CORN HEAD, Oil Drive; •JOHN DEERE 920 20' PLATFORM W/ TRANSPORT

MACHINERY & EQUIPMENT: •JOHN DEERE 7300 12 ROW PLANTER,

3 Bushel Boxes, Row Cleaners, Finger Pickup, Lift Assist, 250 Monitor, Nice; H&S Two Speed Tandem Axle Manure Spreader, Twin Beaters, 540 PTO; Tebben 3pt 7 Shank Ripper, Spring Reset, Buster Bar; John Deere 120, 20' Stalk Chopper; John Deere 960 23' Cultivator w/3 Bar Harrow; John Deere 1100 3pt Field Cultivator w/3 Bar Harrow; NH3 11 Shank Pull Type Tool Bar, Hyd. Shutoff; 875 John Deere Row Crop Cultivator, 30', C Shanks & Rolling Shields; John Deere 400 20' Rotary Hoe; John Deere 24 T Square Baler; Fast Sprayer w/ 60ft Boom w/ Raven Monitor; JD 230 Disc, 21', Cone Blades; Hillsboro Tri Axle 16' Fifth Wheel, 9-14.5 Rubber; Hay Rack w/ Poly Tank & 3.5hp Briggs Transfer Pump; BWA Disc; Flare Box; Speed King 8"x55" Auger, 7.5hp Electric Motor; Sudenga Truck Auger 8"x30', 5hp Elec Motor; Grain Elevator 52' w/Electric Motor; Farm Fans AB 120 A Dryer w/ 2222 hrs



TRUCKS: •FORD 880 Twin Screw, 81975 Miles, 1975 Model, Automatic Trans, 9-20 Rubber, Roll Tarp, Very Nice; •FORD 900 Twin Screw, 84529 Miles, Eaton Fuller 8 Speed, 10-R20 Rubber, Roll Tarp

MISC: 500 Gal Diesel Barrel; Poly Tank; Jetco Hyd. Post Pounder

LARRY & DIANE DANNEN

507-375-3423

CONSIGNED ITEMS: JD 1010 Flat Fold 22.5' Field Cult; IH 720 5x18" Plow; Bush Hog 3 pt 14' Chisel Plow; Specialties Sprayer w/ 500 Gal tank & 40' Boom; Feterl 10"x61' Auger w/ Swing Hopper; Bradford 235 Bushel Wagon; Case IH 20' Tandem Disc; JD Suitcase Weights; Deutz Allis Suitcase Weights

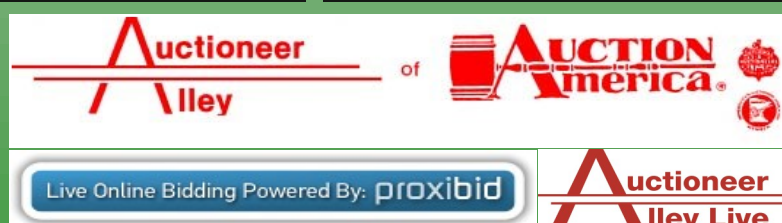
AUCTION TERMS: U.S. funds-cash or bankable check or bank wire transfer payable the day of the auction. Owners & sales staff are not responsible for accidents. All items are being sold as is with no stated or implied warranty. Statements made the day of the auction take precedence over any & all printed material. The information given is believed to be true & correct to the best of the owners & sales staffs ability, but IS NOT GUARANTEED. Buyers assume full responsibility for all items upon purchase & winning the bid. Buyer shall make all inspections of items prior to purchase & rely solely on their judgment as to condition, age, hours, mileage & any safety or other defects. All out of the area buyers shall provide letter of credit to the auction company prior to purchasing. All buyers must register for bidder number prior to bidding. All sales are FINAL.

AUCTIONEERS NOTE— We are very pleased to be asked to represent the Anderson and Dannen Families with the sale of their well maintained farm equipment. This equipment has been well cared for and for the most part always been shedded. Additional pictures on proxibid.com or auctioneeralley.com. Online bidding at PROXIBID.COM OR AUCTIONEERALLEYLIVE.COM Please register early if you are going to bid online. THERE ARE NOT A LOT OF SMALL ITEMS SO PLEASE BE ON TIME! We look forward to seeing you sale day! LUNCH ON GROUNDS!

INSPECTION: Equipment inspection will be welcome between 10 A.M. and 4 P.M. 2 days prior to the sale or by appointment with Dennis 507-317-7425 or Larry 507-375-3423.

AUCTIONEERS AND SALES STAFF

DUSTYN HARTUNG 507-236-7629
KEVIN KAHLER-507-920-8060
ALLEN, RYAN, & CHRIS KAHLER,
DOUG WEDEL, DAN PIKE & DAR HALL



www.auctioneeralley.com

CLERKS

NK CLERKING—LEAH HARTUNG
NORA KAHLER
JANET KAHLER