

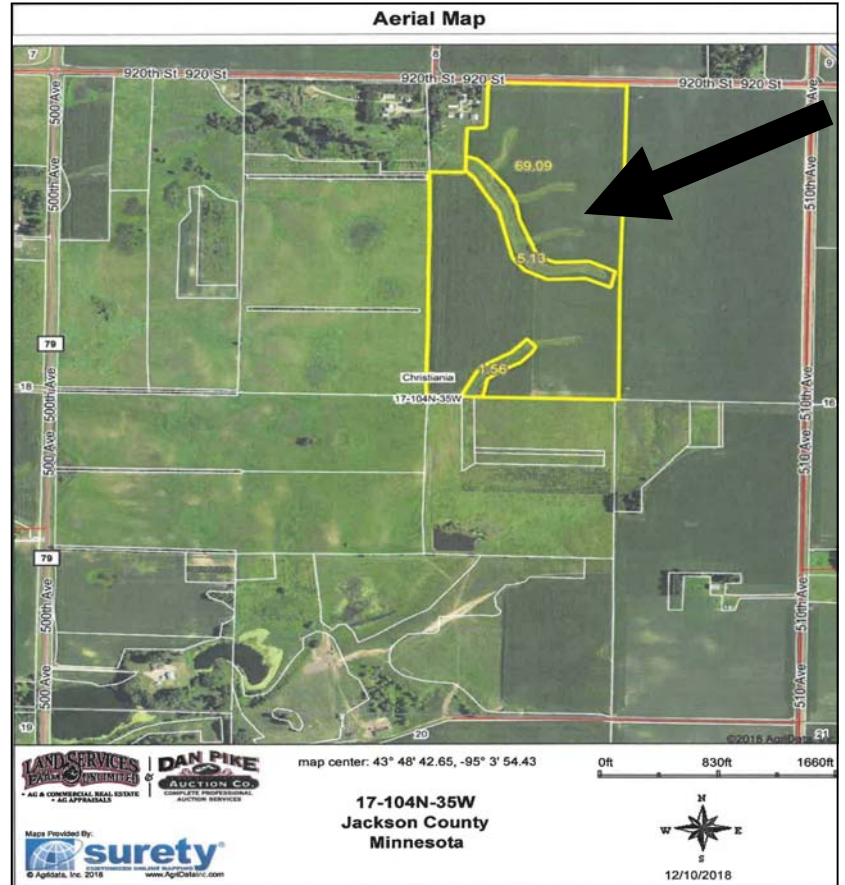
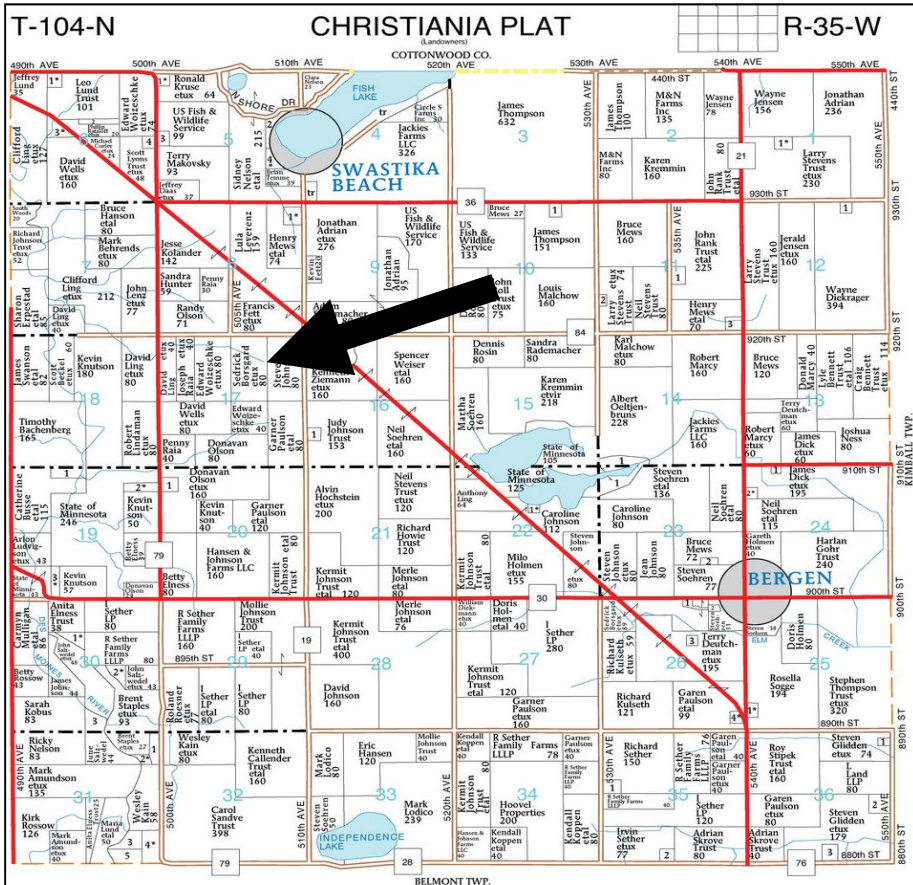


74.6 ACRES +/-

Christiana Township Jackson County, Minnesota

Farmland For Sale

We are very pleased to offer for sale the Borsgard Family farmland containing 74.6 acres +/- in Christiana Township, Jackson County, Minnesota.



Legal Property Description

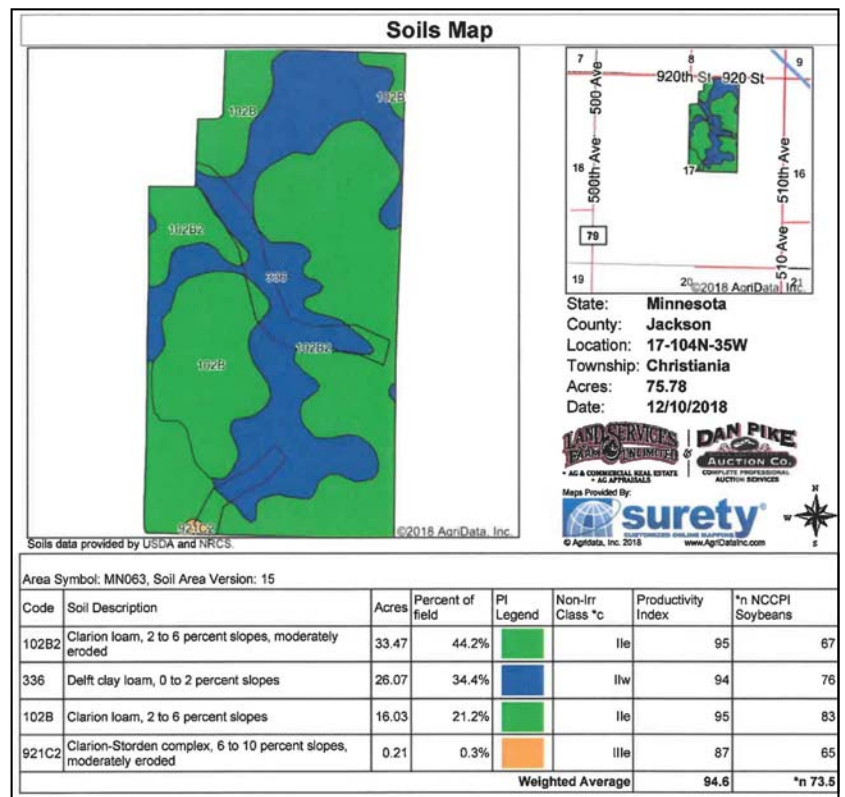
The West Half of the Northeast Quarter (W1/2 NE1/4) except the building site area in the northwest corner in 17-104N- 35W Jackson County, MN. Containing 74.6 acres more or less

Crop Productivity Index & Tillable Acres:

94.6 Crop Productivity Index
Approximately 67 acres tillable acres more or less and 6.7 acres enrolled in CRP.

REAL ESTATE SALE TERMS

Farm is being offered subject to a 2019 cropland lease. The terms of the sale of this farm is based on a cash sale, with possession upon closing. The property is being sold subject to any and all zoning, environmental, municipal, state, or federal laws or easements of record. Property is being sold "As Is" and the buyers are responsible for all inspections of the property prior to their purchase of it. All information contained in this brochure and provided by the sellers and/or their agents is subject to the inspection and verification by all bidders/buyers relying on it. No guarantee or warranty will be expressed or implied by the sellers or their agents and there is no liability assumed by the sellers or their agents for the accuracy, error or omission of any information provided. All offers & sales are subject to owner's approval. Land & Farm Services Unlimited, LLC, Dan Pike represent the sellers in this transaction.



This farm is being marketed on a Listed/Private Sale Method. If interested contact Dan Pike to make an offer. All interested parties should contact Dan Pike at Land & Farm Services Unlimited, LLC @ 507-847-3468. Call before it is gone!

PROPERTY OFFERED EXCLUSIVELY FOR SALE BY



410 Springfield Parkway Jackson, MN.
507-847-3468 or 888-847-3486
www.landfarmservices.com or
www.danpikeauction.com

LISTING BROKER

DAN PIKE

507-847-3468 or 507-841-0965

Land & Farm Services Unlimited, LLC



Broker's Property Comments

This farm would make a good addition to any farming operation & is an excellent opportunity to purchase good quality southern Minnesota farmland. If you are a farmer looking to add to your present operation or an investor, make sure to take a look. Make sure to call before it is gone.

FOR MORE INFORMATION REGARDING THIS FARM CHECK OUR WEB SITE

www.landfarmservices.com
or www.danpikeauction.com