

Can't make it to the auction?  
**ONLINE BIDDING**  
 POWERED BY  
**Equipmentfacts**

# TWO LOCATION RETIREMENT FARM EQUIPMENT AUCTION

Saturday,  
 August 17, 2019  
 @ 9:45 A.M.

Online bidding will be available for  
 the equipment sold at the  
 Eugene Peterson location only.  
 Go to [www.pikebid.com](http://www.pikebid.com) to register to bid.

**Saturday, August 17, 2019 @ 9:45 A.M.**

The below listed equipment will be offered for sale at the Eugene Peterson farm at 89755 580th Avenue Mt. Lake, MN. at 9:45 A.M. The Eugene Peterson farm is located from Bergen, MN. 4 miles east on County Road #30 & 1/4 miles south OR from the junction of Highway #60 & County Road #1 on the south side of Mt. Lake, MN. 6 miles south on County Road #1, then 1/2 mile east to Jackson County Road #29, then 4-1/4 miles south.



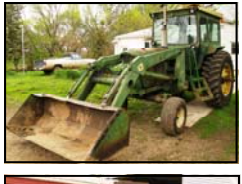
**COMBINE & HEADS:** 2004 JD 9860 STS combine w/ 2,153 sep. & 3,200 eng. hrs., 18.4 x 42" dual rubber & 28L x 26 rear rubber. Mauer bin extension, Redekop chopper, Green Star ready, Brown box monitor & ser. 705987. Very nice well cared for combine.; 2010 JD 608C Stockmaster \*RN corn head w/ dual shaft hookup, stock stompers, row guide and header height, ser. # 0735671. Sharp head.; 2011 JD 630F flex head w/ full finger auger Ser. 0746287. Very clean nice head.; JD 4 wheel running gear style header trailer



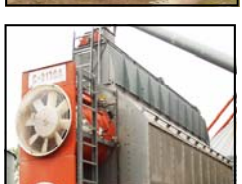
**TRACTORS - FORKLIFT & SKIDLOADER:** 1991 JD 8760 4x4 tractor w/ 6,965 ind. hrs., 18.4 x 42" rubber, 3 hyd. outlets, standard draw bar, engine was rebuilt at 5,863 hour by Windom Farm Service and over \$22,000 was spent on it at that time. This tract was recently serviced with less than 10 hours since that was completed. Ser. 003941. Very nice tractor; 1981 JD 4840 (D) tractor w/ 6,972 ind. hrs., 18.4 x 42: rubber, axle 10 bolt duals, PS trans., 3 hyd. outlets, new style step, ser. #013755RW; 1976 JD 4630 (D) tractor w/ 2,813 ind. hrs. on tach not actual, 18.4x42" rubber, axle duals, set of 10 front weights, new style 134 AC, 2 hyd. outlets, 3pt. yoke, Ser. #021250R; 1976 JD 4630 (D) tractor w/ 9,385 ind. hrs., 18.4 x 38: rubber, axle 10 bolt duals, 3 hyd. outlets, new 134 AC, new style step, Syncro trans., new cab interior, ser. # 025440R; JD 4020 (D) side console hyd. tractor w/ JD 158 loader, factory cab, 18.4x34" rubber, 2 hyd. outlets, new style step, 12,167 ind. hrs. New clutch & PTO overhaul in 2019; 1997 Caterpillar 30 LP forklift w/ 3 stage mast, side shift, 13,047 ind. hrs., Ser. #3AM01924; Gehl 4500 (G) skidloader w/ material bucket & 1,444 ind. hrs.;



**TRUCKS - PICKUPS & TRAILERS:** 1984 Ford F-700 twin crew truck w/ 20' steel box, hoist, 370 V-8 engine, PS., 134,xxx ind. miles, approx. 7,000 on engine; 1981 IH F1954 twin screw truck w/ Crysteel 20' steel box, hoist, 466 diesel engine, 5 & 4 trans., roll tarp, 50,430 ind. miles & 11R x 22.5 rubber; 1979 Chevy C-70 ele./hyd. lift tag axle truck w/ 20' Crysteel box with Teflon floor, hoist, 366 V-8 engine, PS., 11R x 22.5 front rubber & 10:00 x 20" rear rubber, 83,631 miles. This truck was purchased new by the Petersons; 1979 IH F1924 twin screw truck w/ 20' steel box, hoist, auto trans., roll tarp, 446 V-8 engine, 81,938 ind. miles; 1978 IH 1700 tag axle truck w/ 20' Crysteel box, V-8 engine, 5&2 trans., roll tarp & 9:00 x 20" rubber, 1975 Chevy C-65 air lift tag axle truck w/ 18.5' steel box, 366 V-8 engine, Air brakes, Liberty seat, new roll tarp 3 years ago, 10:00 x 20" rubber, nice truck; 1969 Chevy C-50 tag axle truck w/ only 55,672 ind. miles, 18' steel box, 366 V-8 engine, 5&2 trans., 10:00 x 20" front rubber & 9:00 x 20" rear rubber; 1967 Dodge 700 tag axle truck w/ Midwest 18' steel grain box, hoist, V-8 engine, 5&2 trans., 87,xxx indicated miles & 9:00 x 20" rubber; 1963 Ford 850 twin screw truck w/ Obeco 18' wood box, hoist, approx. 1,500 miles on engine overhaul, 538 V-8 engine, 5&3 trans., 9:00x20" rubber; 1988 Dodge 250 4x4 Power Wagon pickup w/ 318 V-8 engine, auto trans., PS., AC, AM-FM & 90,734 ind. miles; 1986 Chevy C-20 4x4 pickup w/ 350 V-8 engine, 4 spd. trans., electric windows & 176,000 ind. miles; Schweiss 18' bumper hitch tandem axle flatbed trailer;



**GRAIN CART - FIELD & OTHER EQUIPMENT:** Brent 420 grain cart w/ 20.8 x 38" rubber, ser. #B20-730-119; Wilrich V957 5 shank disk ripper w/ 3 bar leveler, new lead shanks & some new bearing; JD 750 20' bean drill w/ Progressive hyd. marker, Dickey John monitor, seed auger with plastic cup flighting, new disk & down spouts approximately 80 acres ago, ser. #750X014864; C/IH 4900 35' field cultivator w/ walking axles & 3 bar leveler; C/IH 4300 24' pulltype field cultivator w/ 3 bar leveler & walking axles; C/IH 183 12RN row crop cultivator w/ shields; C/IH 496 24' tandem disk w/ cushion gang; Hardi Commander 1,200 gal. PT sprayer w/ 90' boom, triple nozzles, Hardi monitor & controls, PTO pump, foamer, chemical injector & 320x90Rx46" rubber; Hesston 32' field cultivator w/ knock on shovel & 3 bar leveler; JD 400 28' rotary hoe w/ transports; JD 1100 24' field cultivator; Tye 3pt. 20' bean drill w/ marker; JD RM 8RN cultivator w/ shields; JD 275 3pt. snowblower w/ hyd. spout; Rock wagon w/ gear & hoist; JD 101 28' Donahue style planter trailer; JD RM 8RN cultivator for parts; 2 - 300 gal fuel barrels; 100 gal. pickup fuel tank w/ pump;



**GRAIN DRYER - HOLDING BIN - WAGONS & GRAIN HANDLING EQUIPMENT:** Farm Fans C-2130A continuous flow 3 phase grain dryer w/ 3,944 ind. Hrs., new center SS floor, Ser. #C-21308; Mac air grain pump system w/ 30 hp. 3 phase electric motor; Brook 3,500 bu. Cone bottom wet holding bin w/ 10" unloading auger & approx. 2 year old 10 hp. Motor; 2 - 1,000 gal. LP tanks. (The dryer, grain pump, holding bin & LP tanks are located at Richards's farm, but will be sold at Eugene's farm following the equipment.); M&W 500 bu. gravity wagon w/ HD gear; Parker 325 bu. center dump gravity wagon & 12 ton gear; Parker 225 bu. gravity wagon w/ gear; Neuro PTO 660 grain vacuum w/ several section of tubing, Ser. #121086; Feteral direct drive 8" x 60' auger w/ swinging hopper & hyd. lift; Feteral 10" x 36' truck auger w/ 18 hp. gas motor; 2 - Feteral electric grain screeners;



**LAWN MOWER - ANTIQUE - HOUSEHOLD - SHOP & MISCELLANEOUS ITEMS:** Schweiss portable wood splitter w/ gas engine; Dixon lawn mower; Yardman lawn mower; 1902 Oak antique ice box from the Herrich Refrigeration Company Waterloo, Iowa, very nice shape out of the Monterey Peterson store in Trimont; Treadle sewing machine; Library table; Steel shelving; Cardboard barrels; Cistern pump; Maytag wringer washing machine; Wood post; Parts washer and other items too numerous to mention.



**Saturday, August 17, 2019**

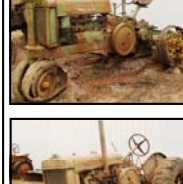
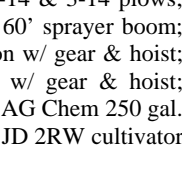
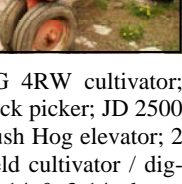
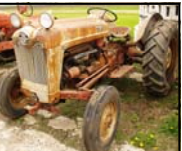
**@ Approximately 12:15 to 12:30 P.M.  
 or 30 minutes following sale at Eugene's farm.**

The below listed equipment will be offered for sale at the Richard Peterson farm at 89874 590th Avenue Mt. Lake, MN. Approximately 30 minutes following the items being sold at Eugene's farm at approximately 12:15 to 12:30 P.M. The Richard Peterson farm is located from Bergen, MN. 5 miles east on County Road #30 & #29 then 1/4 mile south OR from the junction of Highway #60 & County Road #1 on the south side of Mt. Lake, MN. 6 miles south on County Road #1, then 1/2 mile east to Jackson County Road #29, then 4 miles south, 1 mile east & 1/4 mile south.



**COLLECTOR - ANTIQUE PROJECT TRACTORS**

JD 630 w/ NF, not running, ser. #630 9621; JD MT w/ not running, elec. start, fenders & lift draw bar, ser. # 24791; JD H w/ not running, NF, ser. #25205; JD G w/ not running, elec. start, Ser. # 4363; JD B w/ not running, ser. #B75710; JD A w/ not running, ser. # 439499; JD G un-styled not running, ser. # 4363; JD GP not running w/ ser. #207634; Avery BF w/ elec. start, not running; Avery BF manual crank not running; JD H not running w/ ser. 36411; MF 44 not running w/ ser. #0GR346; 1935 JD A un-styled not running w fan drive shaft through the water jacket style, ser. # 414438; JD B non-running w/ cast frame, ser.13898; 1949 AC WD w/ overhauled motor; 1958 Ford 800 non-running w/ Ford mounted loader; JD 316 lawn mower for parts;



**EQUIPMENT:** Sudenga 7" x 47' auger; Feteral 10" x 60' auger needs work; Stanhoist 3pt. disk mower for parts; Tye 3pt. bean drill for parts; MM pulltype pitmanless mower; JD RM 4RW & 8RW cultivators; JD RG 4RW cultivator; Brady 4RN stalk cutter; Melkem hyd. rock picker; JD 2500 6-18" plow; MM grain drill on steel; Bush Hog elevator; 2 - 7 section drags w/ carts; Ford 3pt. field cultivator / digger; Ford 3pt. 2 bottom plow; Oliver 2-14 & 3-14 plows; Wards lo-load running gear; Shop built 60' sprayer boom; JD 21' straight disk; Electric flare wagon w/ gear & hoist; Cockshutt 311 hay rake; Rock wagon w/ gear & hoist; Hahn H-300 SP sprayer for parts; Set of AG Chem 250 gal. saddle tanks; Old steel wheeled wagon; JD 2RW cultivator for JD MT tractor

**PICKUPS - TRAILERS:** Stock Master 6' x 16' livestock trailer; 1961 Chevy tag axle truck w/ B&H for parts; 1981 Ford F-100 2wd pickup for parts; 1954 R-160 truck for parts; 1950 Chevy truck w/ 5 window cab for parts; 1950 Dodge 1/2 ton pickup w/ 6 cylinder engine & manual trans, not running; 1936 Dodge 1 ton pickup for parts; 1930's Chevy 1-1/2 ton truck for parts; Flatbed trailer w/ trailer house axles;

**LIVESTOCK EQUIPMENT:** NH 65 & 68 square hay balers; Balzer 1,500 gal. honey wagon w/ injector, has not been used for sometime; Balzer tandem axle PTO manure spreader; Hay flatrack w/ gear; Lorenz feed grinder for parts;

**MISCELLANEOUS ITEMS:** 1,000 gal. fuel barrel w/ pump; 300 gal. overhead barrel; Set of rear steel wheels for JD GP; Set of rear steel wheels for JD A; Set of JD D fenders; Set of AC WC non-style fenders; Antique steel wheeled gravel running gear; Assorted antique wheel weights; Antique Royal gas pump; JD hand corn sheller; 4 - antique hand grain screeners; antique cream cans; 2 - Pickup tool box w/ fuel tank; Set of side mounted pickup toll boxes;

**OTHER ITEMS:** Clark 3pt. forklift; 1,600 & 1650 gal. poly water tanks; Transfer pump w/ gas engine & 2" hose; 2 - chemical inductors; 2 - chemical pumps; Assorted truck tires & rims; and other items too numerous to mention.



**AUCTION CONDUCTED BY**



Dan Pike MN License #32-19-003  
 Jackson, MN  
 507-847-3468 (O) or 507-841-0965 (C)  
 Dustyn Hartung  
 507-236-7629  
 Allen, Kevin & Ryan Kahler  
 507-920-8060 or 507-227-8528  
 Eldon Olson  
 Doug Wedel Darwin Hall  
 507-236-4255 507-327-0535  
 Scott Christopher  
 507-841-3125

410 Springfield Parkway  
 Jackson, MN 56143  
 507-847-3468

[www.danpikeauction.com](http://www.danpikeauction.com)



# Eugene & Richard Peterson

For more information call either Eugene at 507-301-4112 or Richard at 952-237-9813

**AUCTION TERMS:** U.S. funds - cash or bankable check or bank wire transfer payable the day of the auction. Owners & sales staff are not responsible for accidents. All items are being sold as is with no stated or implied warranty. Statements made the day of the auction taken precedence over any & all printed material. All titles will be transferred by the auction company, a \$35 document fee will be charged to the buyers in addition to applicable taxes & license fees. The information given is believed to be true & correct to best of the owners & sales staffs ability, but IS NOT GUARANTEED. Buyers assume full responsibility for all items upon purchase and winning the bid. Buyer shall make all inspections of items prior to purchase and rely solely on their judgment as to condition, age, hours, mileage and any safety or other defects. All out of the area buyers shall provide letter of credit to the auction company prior to purchasing. All buyers must register for buyers number prior to bidding. All sales are final. LUNCH ON GROUNDS.

**AUCTIONEERS NOTE:** We are extremely honored to be asked to represent the Peterson Brothers with their retirement sale. Their equipment is well maintained. Remember this will be a 2 location sale starting at the Eugene Peterson farm at 9:45 A.M. and approximately 30 minutes following the sale of the items at Eugene's farm we will be moving to Richard's farm to sell the antique tractors and other items there. Make sure to be with us at the sale starting promptly at 9:45 A.M.

**INSPECTION:** Equipment inspection will be welcome between 8:30 A.M. and 4:00 P.M. 2 days prior to the sale or by appointment with Eugene at 507-301-4112 or Richard at 507-952-237-9813.